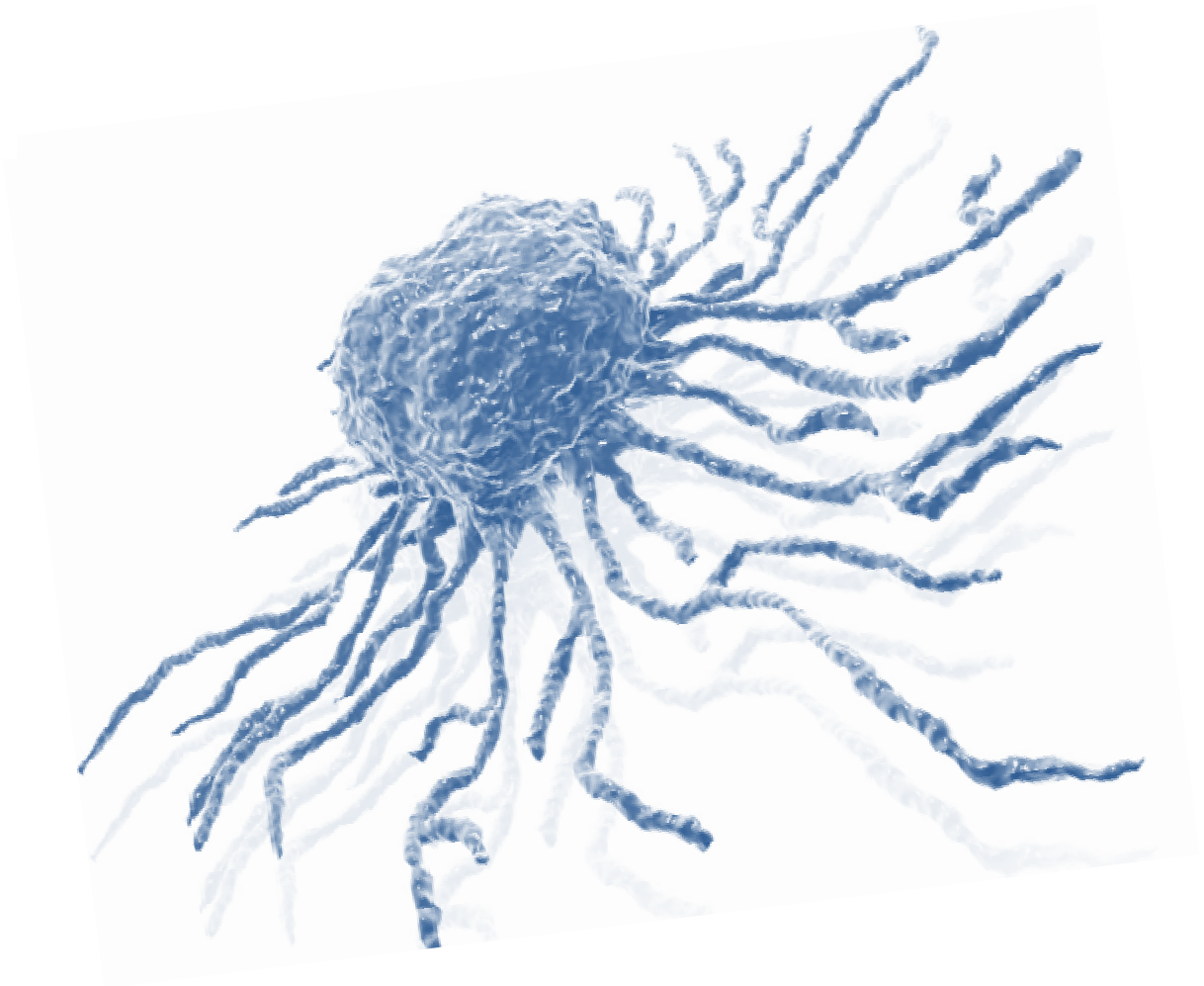


DreamFect™ Stem Transfection Reagent

INSTRUCTION MANUAL



DreamFect™ Stem

Instruction Manual

DreamFect™ Stem is an original, simple and efficient reagent especially developed to transfect multipotent and embryonic stem cells with high transfection efficiency and superior transgene expression level.

List of DreamFect™ Stem kits

Catalog Number	Description	Volume (µL)	Size (number of transfection / µg of DNA)
ST30500	DreamFect™ Stem	500	125-250
ST31000	DreamFect™ Stem	1 000	250-500

Use the content of the list above to determine the appropriate catalog number for your needs. You can order these products by contacting us (phone, fax, e-mail: order@ozbiosciences.com) or directly via our website www.ozbiosciences.com. For all supplementary information, do not hesitate to contact our technical support (tech@ozbiosciences.com).

OZ Biosciences SAS

163 avenue de Luminy
Case 922, zone entreprise
13288 Marseille cedex 09 - FRANCE
Ph: +33 (0) 486 948 516
Fax: +33 (0) 486 948 515
contact@ozbiosciences.com
order@ozbiosciences.com

OZ Biosciences INC

4901 Morena Blvd,
Suite 501
San Diego CA 92117 - USA
Ph : + 1-858-246-7840
Fax : + 1-855-631-0626
contactUSA@ozbiosciences.com
orderUSA@ozbiosciences.com

www.ozbiosciences.com



Table of contents

1. Technology	2-3
1.1. Description	2
1.2. Kit contents	2
2. Applications	3
2.1. Application Areas	3
2.2. Cell Types	3
3. Protocols	3-6
3.1. General Considerations	3
3.2. Rapid Protocol – Adherent cells	3
3.3. Suspension cells protocol	4
3.4. Optimization Protocol	5
4. Appendix	7
4.1. Quality control	7
4.2. Troubleshooting	7
5. Related Products	8
6. Purchaser Notifications	9

1. Technology

1.1. Description

Congratulations on your purchase of the **DreamFect™ Stem** transfection reagent!

DreamFect™ Stem transfection reagent is based on the Tee-Technology (“Triggered Endosomal Escape”) that combines and exploits the properties of cationic lipids and polymers to achieve an extremely efficient DNA delivery into stem cells. Because stem cell behavior is quite distinctive to other cells, OZ Biosciences has developed this specific transfection reagent for stem cells. **DreamFect™ Stem** is a powerful reagent dedicated to stem cells with improved cytoplasmic release and better biodegradability. It allows DNA delivery in a variety of stem cells.

DreamFect™ Stem Benefits:

1. High transfection efficiency for multipotent and embryonic stem cells
2. Minimized toxicity due to reagent biodegradability and low DNA amount required
3. Does not affect phenotype and differentiation potential
4. Serum Compatible
5. Simple, Ready-to-use and rapid (no specific buffer)

1.2 Kit Contents

OZ Biosciences offers two sizes of DreamFect™ Stem reagent.

- 1 tube containing 500 µL of DreamFect™ Stem good for 125 to 250 transfections with 1 µg of DNA
- 1 tube containing 1 mL of DreamFect™ Stem good for 250 to 500 transfections with 1 µg of DNA

Stability and Storage

Storage: Upon reception and for long-term use, store the reagent at -20°C.

DreamFect™ Stem kits are very stable for at least one year at the recommended storage temperature.

Shipping condition: Room Temperature.

2. Applications

2.1. Application Areas

DreamFect™ Stem reagent has been specifically developed for very efficient transfection of plasmid DNA into various stem cells. This transfection reagent is serum compatible, biodegradable and can be used with your defined complete medium. This product is very stable, ready-to-use and intended for research purpose only.

2.2. Cell Types

DreamFect™ Stem reagent is suitable for a variety of stem cells such as adult stem cells (Mesenchymal Stem Cells, Adipose-derived Stem Cells), Amniotic Fluid Stem Cells leukemic stem-like cells (KG1a) or embryonic stem cells. An updated list of cells tested with **DreamFect™ Stem** is available on OZ Biosciences website: www.ozbiosciences.com. You can also submit your data to tech@ozbiosciences.com, so we can update this list and give you all the support you need.

3. Protocols

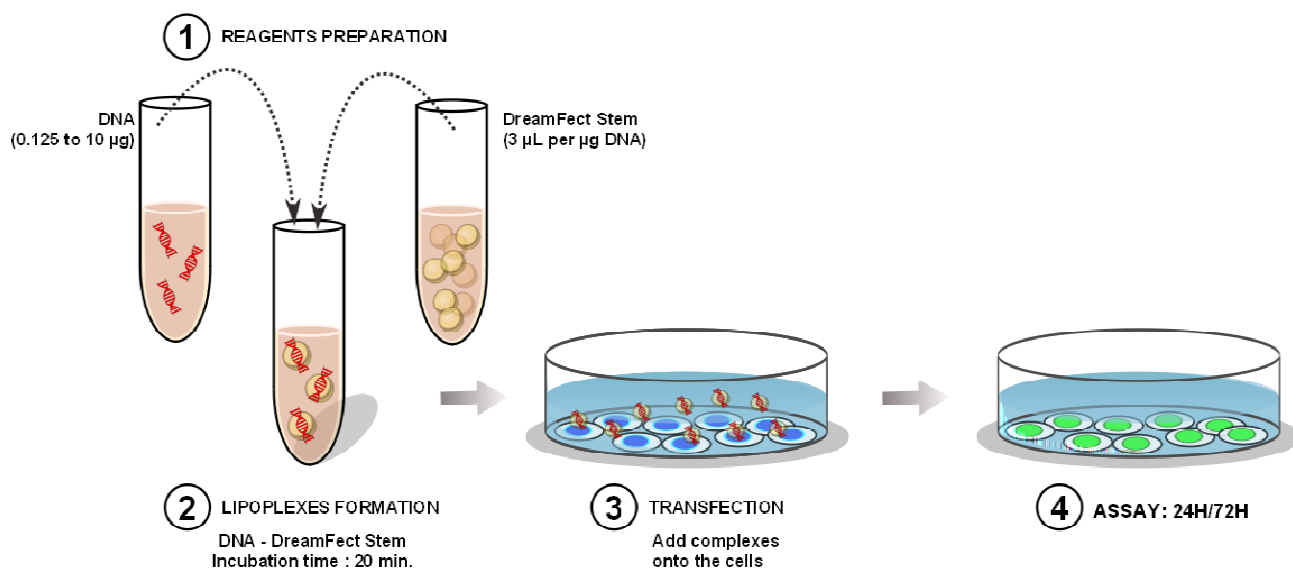
3.1. General Considerations

The instructions given below represent sample protocols that were applied successfully with several types of stem cells. Optimal conditions may vary depending on nucleic acid, cell types, size of cell culture dishes and presence or absence of serum. Therefore, the amounts and ratio of the individual components (DNA and DreamFect™ Stem) may have to be adjusted to achieve best results since each cell type has a particular optimal transfection reagent/nucleic acids ratio. As a result, we suggest you to optimize the various transfection parameters as described in section 3.4. The following recommendations can be used as guidelines to quickly obtain very good transfection and high transgene expression level. As starting point, we recommend to use **3 µL of DreamFect™ Stem / 1 µg of DNA** (for optimal conditions *suggested range 2 to 4 µL of DreamFect™ Stem / 1 µg of DNA*). DreamFect™ Stem can be used in the presence or in the absence of serum. You can use your complete culture medium, except during the preparation of the **DreamFect™ Stem / DNA** complexes.

- **Cells** should be healthy and present a small number of passages. The presence of contaminants (Mycoplasma, fungi) will considerably affect the transfection efficiency.
- **Nucleic acids** should be as pure as possible. Endotoxins level must be very low since it can interfere with transfection efficiency. In the same way, transfection grade plasmid DNA (high degree of supercoiled forms) are recommended to achieve the highest expression. We also suggest avoiding long incubation time of the DNA solution in buffer or serum free medium before the addition of DreamFect™ Stem to circumvent any degradation or surface adsorption.
- **Antibiotics.** The exclusion of antibiotics from the media during transfection has been reported to enhance gene expression levels. We did not observe a significant effect of the presence or absence of antibiotics with the DreamFect™ Stem reagent and this effect is cell type dependent and usually small.

A protocol used for other transfection reagents should not be employed for DreamFect™ Stem and inversely. Each transfection reagent has its own molecular structure, biophysical properties and concentration, which have an important influence on its biological activity.

3.2. Rapid Protocol - Adherent cells



- Seed the cells the day prior transfection. The cells should be at 50-70% confluent at the time of transfection.
- Use cells with a low number of passages.
- DNA and DreamFect™ Stem solutions should be at room temperature and be gently vortexed prior to use. Use 3 µL of DreamFect™ Stem per µg of DNA. We suggest beginning with this ratio and then optimize it, if required, by following section 3.4.

Table 1: Suggested amounts of DNA and reagent depending on your cell culture dishes

Cell culture dish	DNA quantity	DreamFect Stem Volume	Dilution volume	Transfection volume
96 well plate	0.125 µg	0.375 µL	2 x 25	200 µL
24 well plate	0.5 µg	1.5 µL	2 x 50	500 µL
12 well plate	1 µg	3 µL	2 x 50	1 mL
6 well plate	2 µg	6 µL	2 x 100	2 mL
60 mm dish	3 µg	9 µL	2 x 150	4 mL
100 mm dish	6 µg	18 µL	2 x 250	8 mL
T-75 flask	10 µg	30 µL	2 x 350	10 mL

① **For ES cells growing on feeders cells or in feeders free system**, double the amount of DNA and reagent (*i.e* 1µg for 3µL DreamFect Stem in 24 well plate, 2µg for 6µL of DreamFect Stem in 12 well plate or 3 to 4µg of DreamFect Stem in 6 well plate).

- DNA solution.** Dilute 0.125 µg to 10 µg of DNA in 25 µL to 350 µL (see Table 1) of culture medium WITHOUT serum and antibiotics (ideally DMEM, α-MEM, opti-MEM or PBS).
- DreamFect™ Stem solution.** Dilute 0.375 µL to 30 µL of DreamFect™ Stem (see Table 1) in culture medium WITHOUT serum and antibiotics (ideally DMEM, α-MEM, opti-MEM or PBS).
- Add the DNA solution to the DreamFect™ Stem solution, mix gently by vortexing slowly or pipetting up and down 4-5 times. Incubate the mixture for 20 min at room temperature.
The diluted solutions should be combined within 5 minutes.
- Add the mixture dropwise to the cells growing in complete medium and homogenize by gently rocking the plate side to side to ensure a uniform distribution of the mixture.
- Incubate the cells at 37°C in CO2 incubator under standard conditions.

6. Optional but highly suggested: Cell medium could be changed with fresh complete medium after 4 to 6h incubation.
7. Evaluate your transgene expression after 24 to 72 h following transfection.

3.3. Suspension cells Protocol

- The day prior transfection split the cell, in order to have them in an exponential phase of growing. On the day of transfection, DNA and DreamFect™ Stem solutions should be at room temperature and be gently vortexed prior to use. Use 3 µL of DreamFect™ Stem per µg of DNA.

Table2: Transfection conditions suggested for suspension cells

Cell culture dish	Suspension cells number	DNA quantity	DreamFect Stem Volume	Dilution volume	Transfection volume
96 well plate	0.5 – 1 x 10 ⁵	0.25 µg	0.75 µL	2 x 25	100 µL
24 well plate	2 – 4 x 10 ⁵	1 µg	3 µL	2 x 50	250 µL
6 well plate	10 – 15 x 10 ⁵	3 µg	9 µL	2 x 50	1 mL
60 mm dish	5 x 10 ⁶	6 µg	18 µL	2 x 100	2.5 mL

1. **DNA solution.** Dilute 0.25 µg to 6 µg of DNA in 25 µL to 100 µL (see Table 2) of culture medium WITHOUT serum and antibiotics (ideally DMEM, α-MEM, opti-MEM or PBS).
2. **DreamFect™ Stem solution.** Dilute 0.75 µL to 18 µL of DreamFect™ Stem in culture medium (see Table 2) WITHOUT serum and antibiotics (ideally DMEM, α-MEM, opti-MEM or PBS).
3. Add the DNA solution to the DreamFect™ Stem solution, mix gently by vortexing slowly or pipetting up and down for 4-5 times. Incubate the mixture for 20 min at room temperature.
The diluted solutions should be combined within 5 minutes.
4. During complexes incubation, prepare your cells preferentially in serum-free medium. Seed the cells in half of the volume currently use (see Table 2).
5. Add the mixture dropwise to the cells.
6. Incubate the cells at 37°C in CO2 incubator under standard conditions for 4h.
7. Add culture medium containing 20% serum (same volume as transfection volume).
8. Incubate your cells at 37°C under standard conditions until evaluation of your transgene expression (24 to 72 h following transfection).

Important Observations:

- A. Note that transfection of cells in suspension are optimal when performed in the absence of serum. However, transfection can also be achieved directly in the presence of serum.
- B. From our experiences, the key feature is to promote as much as you can the contact between the cells and the transfection complexes. Consequently, here are a few additional propositions:
 - Option 1, concentrate your cells: When the complexes are forming prepare your cells. Spin down the cells, resuspend them at 10 × 10⁶ cells / mL in medium (serum free) and transfer the appropriate cell number to your well according to Table 2. Thereafter, mix the complexes with the cells, incubate 15 minutes and complete the culture medium as indicated in Table 2.
 - Option 2, promote contact by centrifugation: Centrifuge the plate after having mixed the cells with the transfection complexes for 2-3 minutes at around 1000-1200 rpm.



Although high transfection efficiencies can be achieved with the rapid protocol in a various types of stem cells, some optimization may be needed in order to obtain the maximum efficiency for particular stem cells or cell culture conditions. For best results, we recommend optimization of the transfection protocol for each combination of plasmid and stem cell type used in order to get the best out of DreamFect™ Stem.

Several parameters can be optimized:

- Ratio of DreamFect™ Stem to nucleic acid
- Dose of nucleic acid used
- Cell type and cell density
- Culture medium composition (+/- serum) and reagent / nucleic acid complex medium
- Incubation time

We recommend that you optimize one parameter at a time while keeping the other parameters (cell number, incubation time etc.) constant. The two most critical variables are the ratio of DreamFect™ Stem reagent to DNA and the quantity of DNA.

1) DreamFect™ Stem / DNA ratio:

This is an important optimization parameter. DreamFect™ Stem has to be used in slight excess compare to DNA but the optimal ratio will depend on the cell line and the vessel used. It is particularly true for 96 well plates because of adsorption processes. For optimization, first maintain a fixed quantity of DNA (according to the size of your culture dish or cell number) and then vary the amount of DreamFect™ Stem reagent over the suggested range in the Table 3. **You can test ratios from 1 to 6 µL of DreamFect™ Stem reagent per 1 µg DNA.**

Table 3: Suggested range of DreamFect™ Stem for optimization.

Tissue Culture Dish	DNA Quantity (µg)	DreamFect Stem Volume (µL)
96 well	0.125	0.1 – 0.6
24 well	0.5	0.5 – 3
12 well	1	1 – 6
6 well	2	2 – 12
60 mm dish	5	5 – 30
90 - 100 mm dish	10	10 – 60
T-75 flask	15	15 – 90

① **For ES cells growing on feeders cells or in feeders free system,** double the amount of DNA and reagent

2) Quantity of DNA:

To achieve optimal transfection efficiency, the amount of DNA used can be increased. However a high amount of the complexes can result in over-expression or lysis of the cells. These effects vary with the number of cells so, it is important to always keep the number of cells and the incubation time constant during your optimization procedure. Thus, after optimization of the DreamFect™ Stem / DNA ratio, proceed to adjust the best amount of DNA required by maintaining a fixed ratio of DreamFect™ Stem reagent to DNA, and vary the DNA quantity over the suggested range (Table 4).

Table 4: Suggested range of DNA amounts for optimization

Tissue Culture Dish	DNA Quantity (µg)	Transfection Volume
96 well	0.1 – 0.5	200 µL
24 well	0.25 – 2	500 µL
12 well	1 – 4	1 mL
6 well	2 – 10	2 mL
60 mm dish	5 – 30	4 mL
T-75 flask	15 – 90	10 mL

① **For ES cells growing on feeders cells or in feeders free system,** double the amount of DNA and reagent

Thereafter, culture medium compositions, cell number, incubation times can also be optimized.

3) DreamFect™ Stem / Nucleic acid complex medium:

Several tests demonstrated that the use of PBS to prepare the DNA and DreamFect™ Stem solutions instead of serum- and antibiotic-free medium leads to more reproducible transfections and in some cases higher efficiency,

particularly with lower volumes of transfection reagent. PBS composition: 137mM NaCl, 2.7mM KCl, 1.5mM KH_2PO_4 and 6.5mM $\text{Na}_2\text{HPO}_4 \times 2 \text{H}_2\text{O}$; pH7.4.

4) Cell number:

The cell proliferating rate is also a critical parameter in particular for stem cells and the optimal confluency has to be adjusted according to the cells used. Thus, the next step is to use the optimized ratio and DNA amount obtained previously and vary the cell number to be assayed.

Note. The addition of the transfection complex directly to freshly seeded cells can result in a considerable increase of transfection efficiency.

5) Effect of serum /Transfection volume:

Almost all stem cell types transfected with DreamFect™ Stem showed superior results if serum is present during the transfection. Some stem cells may behave differently and transfection efficiency can be increased without serum or under reduced serum condition. **Remember that presence of serum during complex formation is strictly prohibited, as the serum will inhibit their formation.** Transfection efficiency is attained when the initial 3-4 hours of incubation is done. Consequently, the cells may be kept in serum-free or reduced serum conditions during the first 4 hours of transfection. If you use serum-free medium, replace it by a culture medium containing serum or just add serum to the wells according to your standard culture condition after this period. To increase the efficiency of transfection you can reduce the transfection volume.

6) Incubation time:

The optimal time range between transfection and assay for gene activity varies with cell type, promoter activity, expression product, etc. Transfection efficiency can be monitored after 24 - 96 hours by analyzing the gene product. Reporter genes such as GFP, secreted alkaline phosphatase or luciferase can be used to quantitatively measure gene expression.

OZ Biosciences team has developed a detailed protocol for optimization and also cell specific optimal transfection procedures. Thus, do not hesitate to contact our technical service at tech@ozbiosciences.com to request these specific protocols.

4. Appendix

Our dedicated and specialized technical support team will be pleased to answer any of your requests and to help you with your experiments at tech@ozbiosciences.com. In addition, do not hesitate to visit our website www.ozbiosciences.com and the FAQ section.

4.1 Quality Controls

To assure the performance of each lot of DreamFect™ Stem produced, we qualify each component using rigorous standards. The following *in vitro* assays are conducted to qualify the function, quality and activity of each kit component.

Specification	Standard Quality Controls
<i>Purity</i>	Silica Gel TLC assays. Every compound shall have a single spot.
<i>Sterility</i>	Thioglycolate assay. Absence of fungal and bacterial contamination shall be obtained for 7 days.
<i>Biological Activity</i>	Transfection efficacies on MSC cells. Every lot shall have an acceptance specification of > 80% of the activity of the reference lot.

Problems	Comments and Suggestions
<p>Low transfection efficiency</p> <p>Low transfection efficiency</p>	<p>1- DreamFect™ Stem / nucleic acid ratio. Optimize the reagent / nucleic acid ratio by using a fixed amount of DNA (μg) and vary the amount of DreamFect™ Stem from 2 times less up to three times more than the suggested amount detailed in the Table 3 and 4.</p> <p>2- DNA amount. Use different quantity of DNA with the recommended or optimized (above) transfection reagent / DNA ratio.</p> <p>3- Cell density. A non-optimal cell density at the time of transfection can lead to insufficient uptake. The optimal confluency should range from 50 to 70% (true confluency, corresponding to 90% visual confluency) but most favorable cell density may vary according to the cell type; preferably mid-log growth phase.</p> <p>4- DNA quality. Nucleic acids should be as pure as possible. Free of contaminants (proteins, phenol, ethanol etc.) and endotoxins levels must be very low since they interfere with transfection efficiencies. Employ nuclease-free materials.</p> <p>5- Type of promoter. Ensure that DNA promoter can be recognized by the cells to be transfected.</p> <p>6- Cell condition. 1) Cells should have the less passage as possible (< P5 for multipotent stem cells). 2) Cells that have been in culture for a long time (> 8 weeks) may become resistant to transfection. 3) Cells should be healthy and assay during their exponential growing phase. 4) The presence of contaminants (mycoplasma, fungi) alters considerably the transfection efficiency.</p> <p>7- Medium used for preparing DNA / transfection reagent complexes. It is critical that serum-free medium or buffer (HBS, PBS) are used during the preparation of the complexes. Avoid any direct contact of pure DreamFect™ Stem and pure nucleic acid solution with the plastic surface.</p> <p>8- Cell culture medium composition. 1) For some cells, transfection efficiency can be increased without serum or under reduced serum condition. Thus, transfect these cells in serum-free medium during the first 4h of incubation. 2) The presence of antibiotics might affect cell health and transfection efficiency.</p> <p>9- Incubation time and transfection volume. 1) The optimal time range between transfection and assay varies with cells, promoter, expression product, etc. The transfection efficiency can be monitored after 24 – 96h by analyzing the gene product. Several reporter genes can be used to quantitatively monitored gene expression kinetics. 2) To increase transfection efficiency, transfection volume suggested can be reduced for the first 24 hours.</p> <p>10- Old transfection reagent / DNA complexes. The transfection reagent / DNA complexes must be freshly prepared every time. Complexes prepared and stored for longer than 1 hour can be aggregated.</p> <p>11- Transgene detection assay. Ensure that your post-transfection assay is properly set up and includes a positive control.</p> <p>12- Transfection reagent temperature. Reagents should have an ambient temperature and be vortexed prior to use.</p>
Cellular toxicity	<p>1- Unhealthy cells. 1) Check cells for contamination, 2) Use new batch of cells, 3) Ensure culture medium condition (pH, type of medium used, contamination etc), 4) Cells are too confluent or cell density is too low, 5) Verify equipments and materials</p> <p>2- Transgene product is toxic. Use suitable controls such as cells alone, transfection reagent alone or mock transfection with a DNA control.</p> <p>3- DNA quality - Presence of contaminants. Ensure that nucleic acid is pure, contaminant-free and endotoxin-free. Use high quality nucleic acids as impurities can lead to cell death.</p> <p>4- Concentration of transfection reagent / nucleic acid too high. Decrease the amount of nucleic acid / reagent complexes added to the cells by lowering the nucleic acid amount or the transfection reagent concentration. Complexes aggregation can cause some toxicity; prepare them freshly and adjust the ratio as outlined previously.</p> <p>5- Incubation time. Reduce the incubation time of complexes with the cells by replacing the transfection medium by fresh medium after 4h to 24h.</p>

5. Related Products

Description	
Stem cells dedicated reagents	
Lullaby Stem (<i>siRNA transfection reagent</i>)	
RmesFect Stem (<i>Transfection reagent for mRNA</i>)	
MAGNETOFECTION TECHNOLOGY	
Transfection reagents:	
PolyMag Neo (<i>for all nucleic acids</i>)	
Magnetofectamine™ kit: Lipofectamine™ 2000 + CombiMag (<i>for all nucleic acids</i>)	
NeuroMag (<i>dedicated for neurons</i>)	
SilenceMag (<i>for siRNA application</i>)	
Transfection enhancer:	
CombiMag (<i>to improve any transfection reagent efficiency</i>)	
Viral Transduction enhancers:	
ViroMag (<i>to optimize viral transduction</i>)	
ViroMag R/L (<i>specific for Retrovirus and Lentivirus</i>)	
AdenoMag (<i>for Adenoviruses</i>)	
In vivo Magnetofection	
<i>In vivo</i> ViroMag (<i>for magnetic assisted viral infection</i>)	
<i>In vivo</i> PolyMag (<i>polymer-based magnetic nanoparticles</i>)	
<i>In vivo</i> DogtorMag (<i>lipid-based magnetic nanoparticles</i>)	
LIPOFECTION TECHNOLOGY (LIPID-BASED)	
DreamFect Gold (<i>Transfection reagent for all types of nucleic acids</i>)	
Lullaby (<i>siRNA transfection reagent</i>)	
RmesFect (<i>Transfection reagent for mRNA</i>)	
3D TRANSFECTION TECHNOLOGY	
DNA Transfection reagents:	
3DfectIN (<i>for hydrogels culture</i>) / 3Dfect (<i>for scaffolds culture</i>)	
siRNA Transfection reagents:	
si3DfectIN (<i>for hydrogels culture</i>) / si3Dfect (<i>for scaffolds culture</i>)	
PROTEIN DELIVERY SYSTEMS	
Ab-DeliverIN (<i>delivery reagent for antibodies</i>)	
Pro-DeliverIN (<i>delivery reagent for protein in vivo and in vitro</i>)	
PLASMIDS PVECTOZ	
pVectOZ-LacZ / pVectOZ-SEAP / pVectOZ-GFP / pVectOZ-Luciferase	
ASSAY KITS	BIOCHEMICALS
Bradford – Protein Assay Kit	G-418, Sulfate 1g
β-Galactosidase assay kits (CPRG/ONPG)	X-Gal powder 1g
MTT cell proliferation kit	D-Luciferin, K+ and Na+ 1g

Do not hesitate to contact us for all complementary information and remember to visit our website in order to stay informed on our last breakthrough technologies and updated on our complete product list.

contact@ozbiosciences.com / www.ozbiosciences.com

Limited License for *DreamFect™ Stem*

The purchase of *DreamFect™ Stem* Reagents grants the purchaser a non-transferable, non-exclusive license to use the kit and/or its separate and included components (as listed in section 1, Kit Contents). This reagent is intended **for in-house research only** by the buyer. Such use is limited to the transfection and transduction of nucleic acids and virus as described in the product manual. In addition, research only use means that this kit and all of its contents are excluded, without limitation, from resale, repackaging, or use for the making or selling of any commercial product or service without the written approval of OZ Biosciences.

Separate licenses are available from OZ Biosciences for the express purpose of non-research use or applications of *DreamFect™ Stem* Reagents. To inquire about such licenses, or to obtain authorization to transfer or use the enclosed material, contact the Director of Business Development at OZ Biosciences.

Buyers may end this License at any time by returning all *DreamFect™ Stem* Reagents material and documentation to OZ Biosciences, or by destroying *DreamFect™ Stem* Reagents components. Purchasers are advised to contact OZ Biosciences with the notification that *DreamFect™ Stem* Reagents kit is being returned in order to be reimbursed and/or to definitely terminate a license for internal research use only granted through the purchase of the kit(s).

This document covers entirely the terms of *DreamFect™ Stem* Reagents research only license, and does not grant any other express or implied license. The laws of the French Government shall govern the interpretation and enforcement of the terms of this License.

Product Use Limitations for *DreamFect™ Stem*

DreamFect™ Stem Reagents and all of its components are developed, designed, intended, and sold for research use only. They are not to be used for human diagnostic or included/used in any drug intended for human use. All care and attention should be exercised in the use of the kit components by following proper research laboratory practices.

For more information, or for any comments on the terms and conditions of this License, please contact:

OZ Biosciences SAS
Director of Business Development
Parc Scientifique et Technologique de Luminy
163, avenue de Luminy, zone entreprise, case 922
13288 Marseille Cedex 9, France
Tel: +33 (0)4.86.94.85.16
Fax: +33 (0)4. 86.94.85.15
E-mail: business@ozbiosciences.com

CONTACT US

OZ Biosciences SAS
163 avenue de Luminy
Case 922, zone entreprise
13288 Marseille cedex 09
FRANCE

Ph: +33 (0) 486 948 516
Fax: +33 (0) 486 948 515

contact@ozbiosciences.com
order@ozbiosciences.com
tech@ozbiosciences.com

OZ Biosciences INC
4901 Morena Blvd,
Suite 501
San Diego CA 92117
USA

Ph : + 1-858-246-7840
Fax : + 1-855-631-0626

contactUSA@ozbiosciences.com
orderUSA@ozbiosciences.com
techUSA@ozbiosciences.com

www.ozbiosciences.com